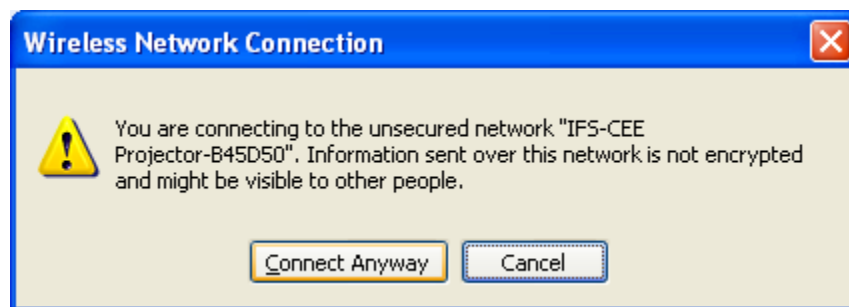
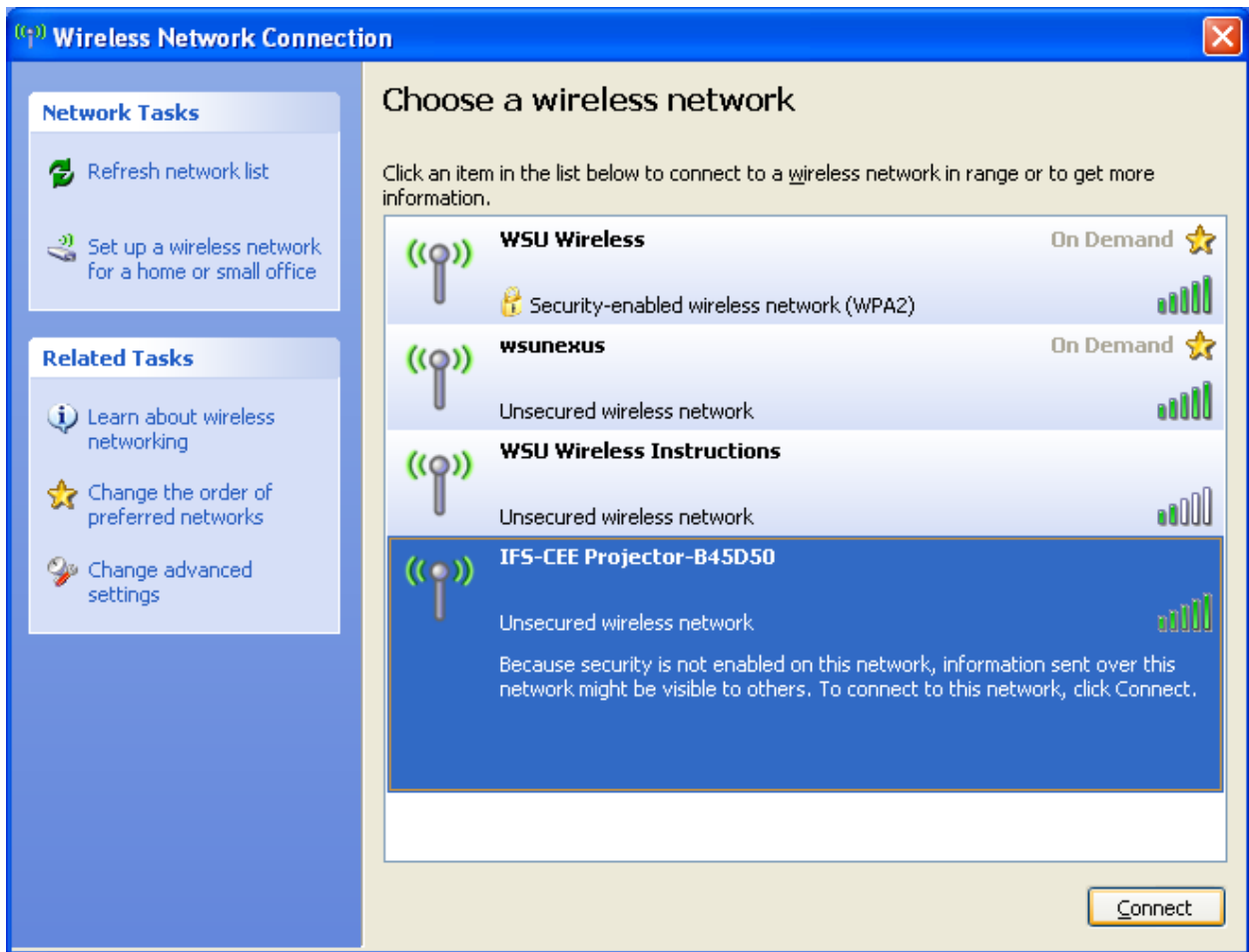
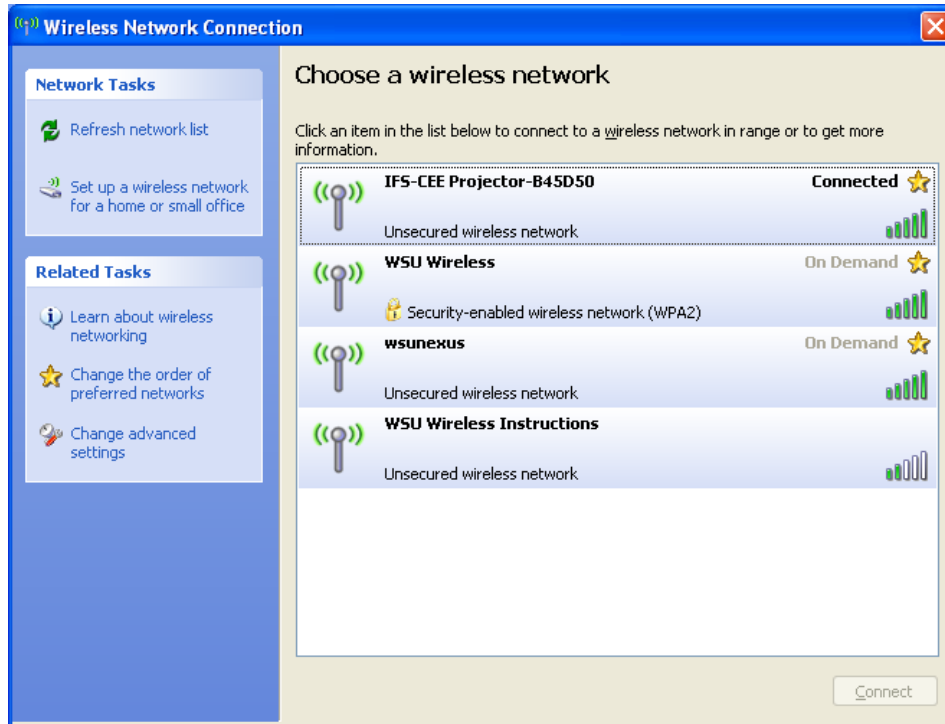


## Sloan 146 - InFocus Projector

The InFocus Projector located in Sloan 146 is configured as an 'unsecured' internet wireless access point. This configuration allows both internet connection and projector display after connection. After turning on the projector, open **Network Connections**, scan for wireless networks, and connect to:

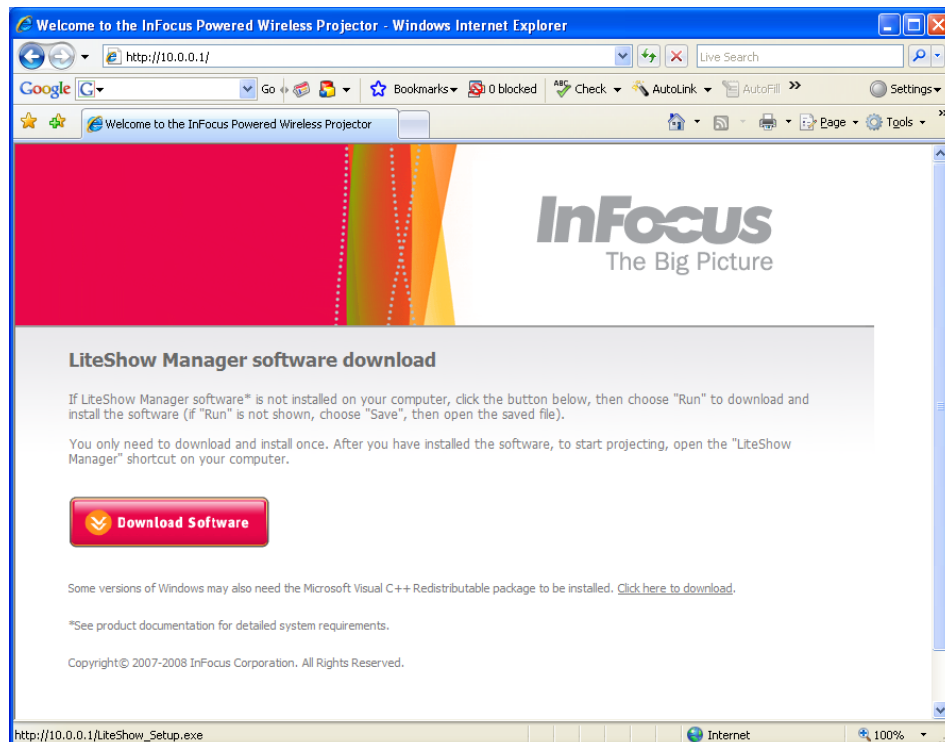
### IFS-CEE Projector-B45D50



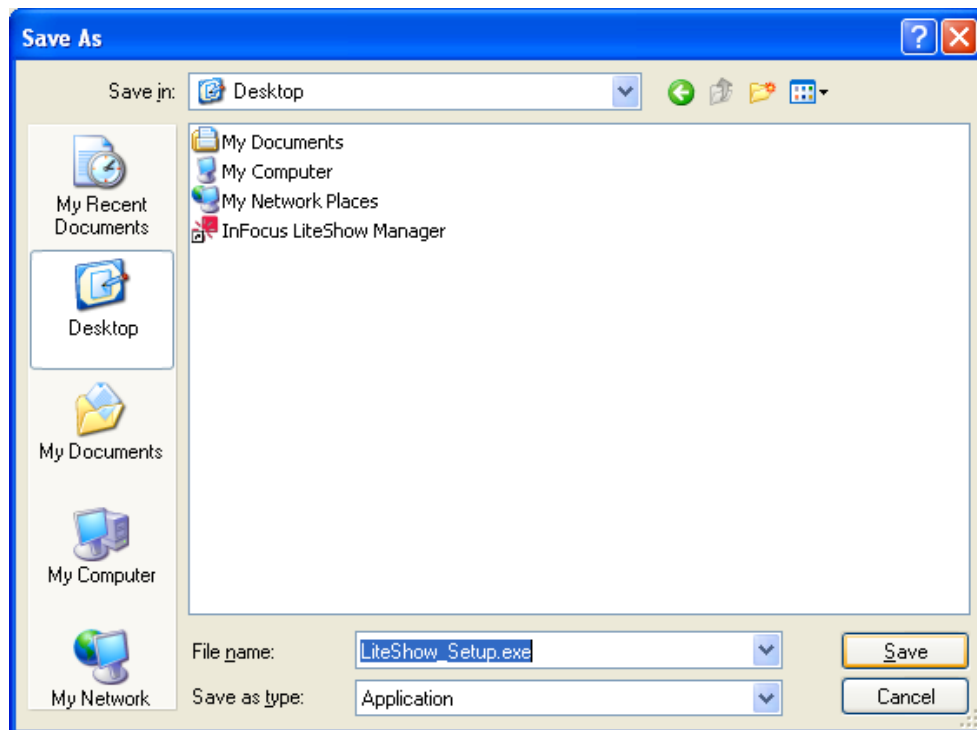
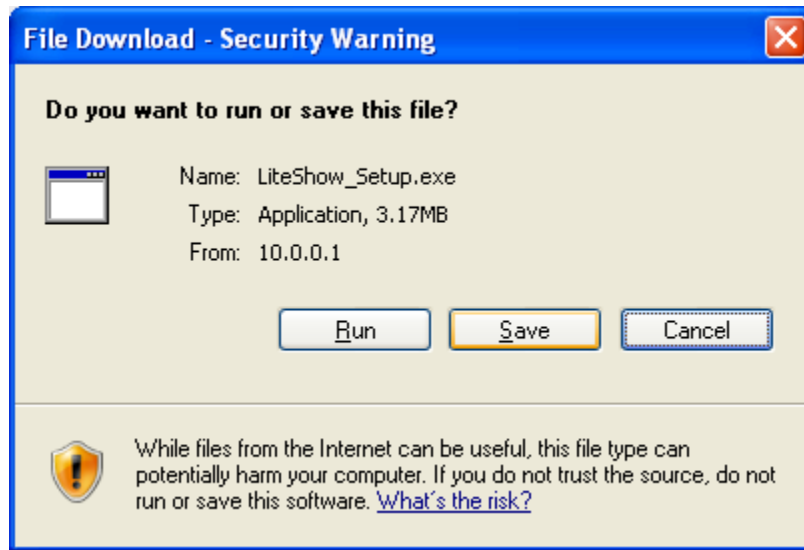


After successfully connecting to the access point, open **Internet Explorer** to the following URL:

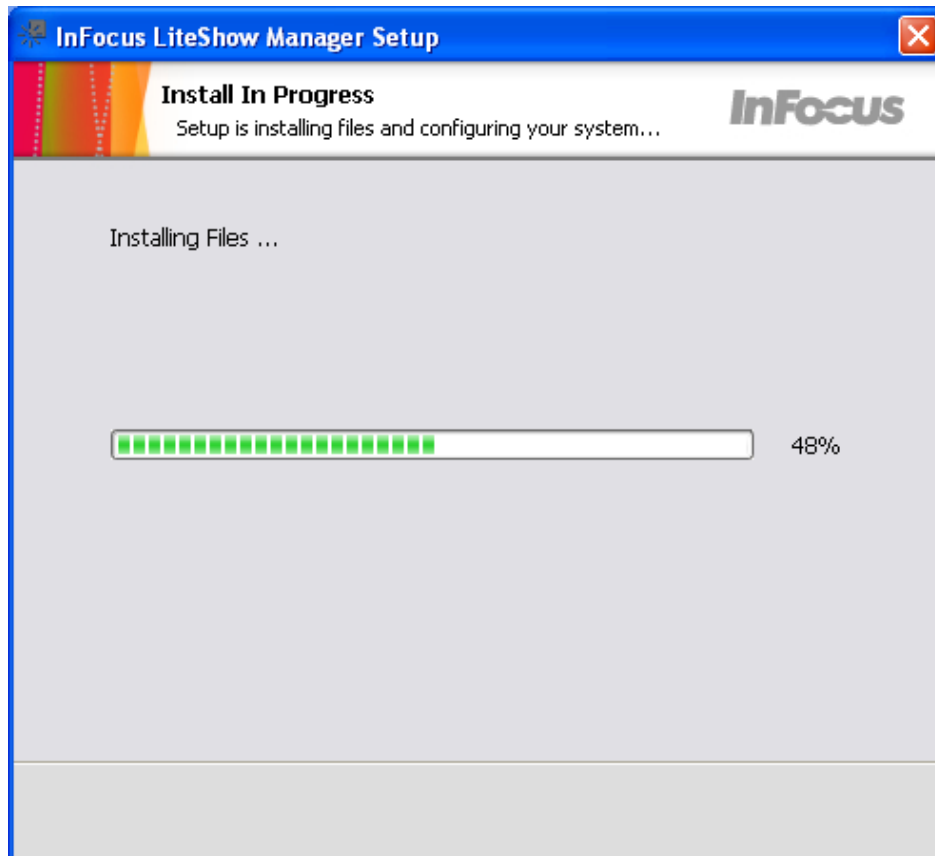
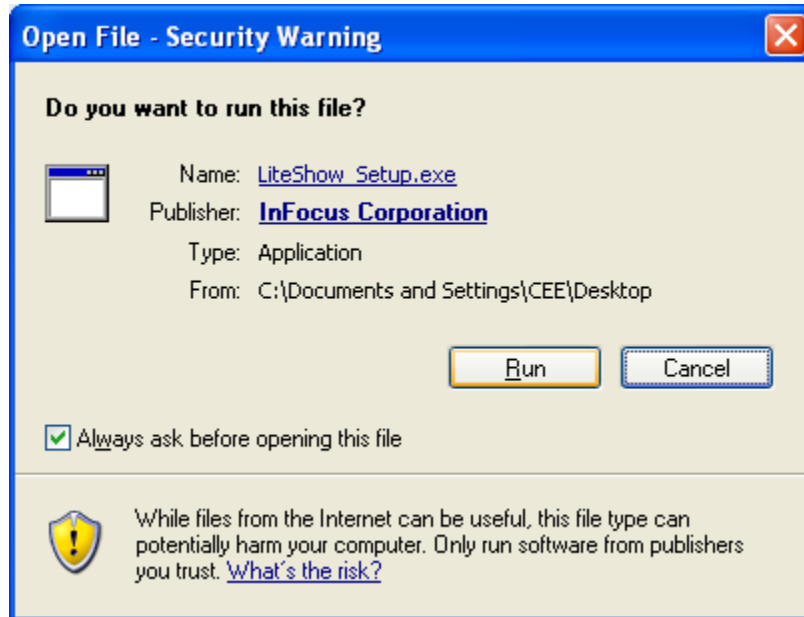
`http://10.0.0.1/`



Select **Download Software** and **Save** the LiteShow Manager Setup Program to your desktop ...



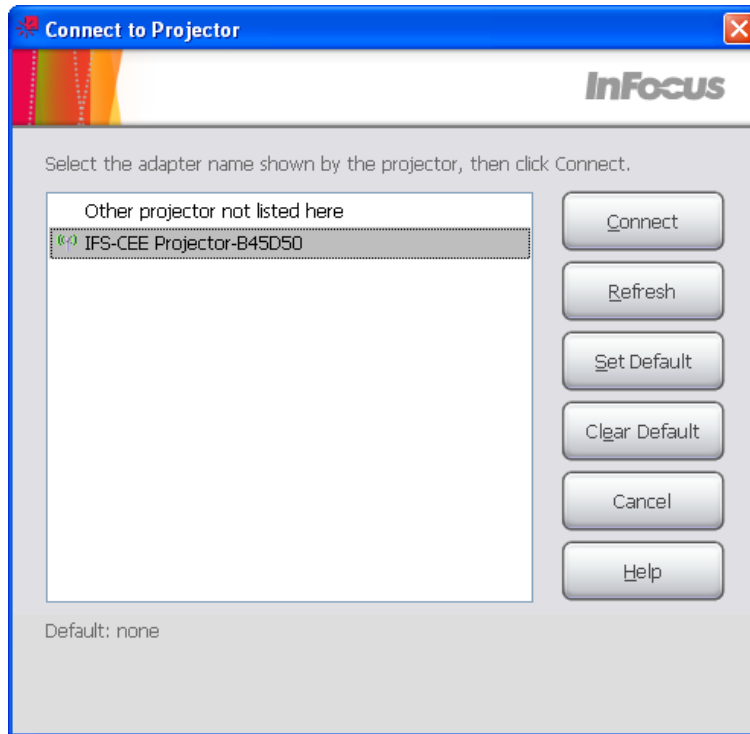
Open the file and select **Run...**



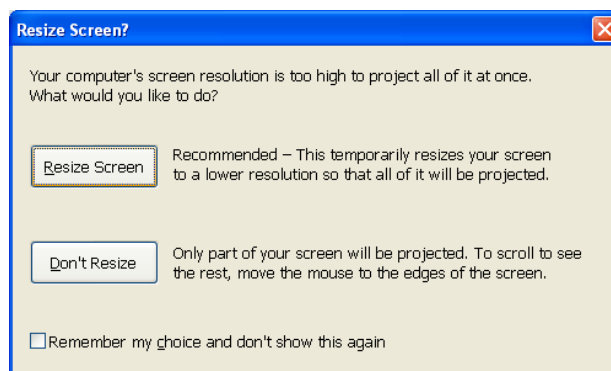


Open LiteShow Manager and **Connect to Projector** 'IFS-CEE Projector-B45D50'...





After connection, select the **Start Projecting** button followed by Resize Screen...



**IMPORTANT:** To enhance the response of the display (especially if using a browser), expand the **Display Mode** menu found on the main screen of the LiteShow Manager Program and select **Options** followed by **Performance...**



Select **Medium speed** followed by OK...

